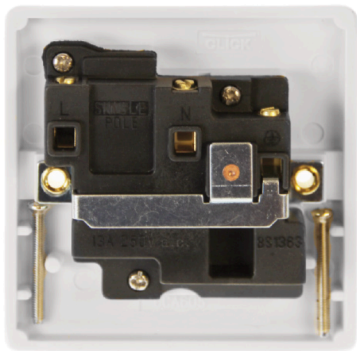




AC19010

13A 1G Switched Socket

- Smooth profile plate
- Switched outlet
- Standard outlet shutters
- Fits on to 25mm deep backbox
- White mouldings uses Antibacterial & Antiviral Certified material



Technical Specification

Plate Dimensions	86mm (W) x 86mm (H) x 9.5mm (D)
Maximum Voltage	250V ~ 50Hz
Load Rating	13A
Plate Fixing Centres	60.3mm
Terminal Torque	2.0Nm
Terminal Capacity	3 x 2.5mm ² or 2 x 4mm ²
Single Pole	Yes
Twin Earth Terminals	No
Operational Temp.	-5°C to +40°C
Warranty	10 Years

1-AC19010-2021-V1